

**Miami River
Commission**

Miami River Greenway Update

Aerials presented from East to West 04.13.21



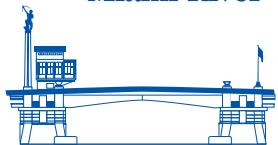
LEGEND

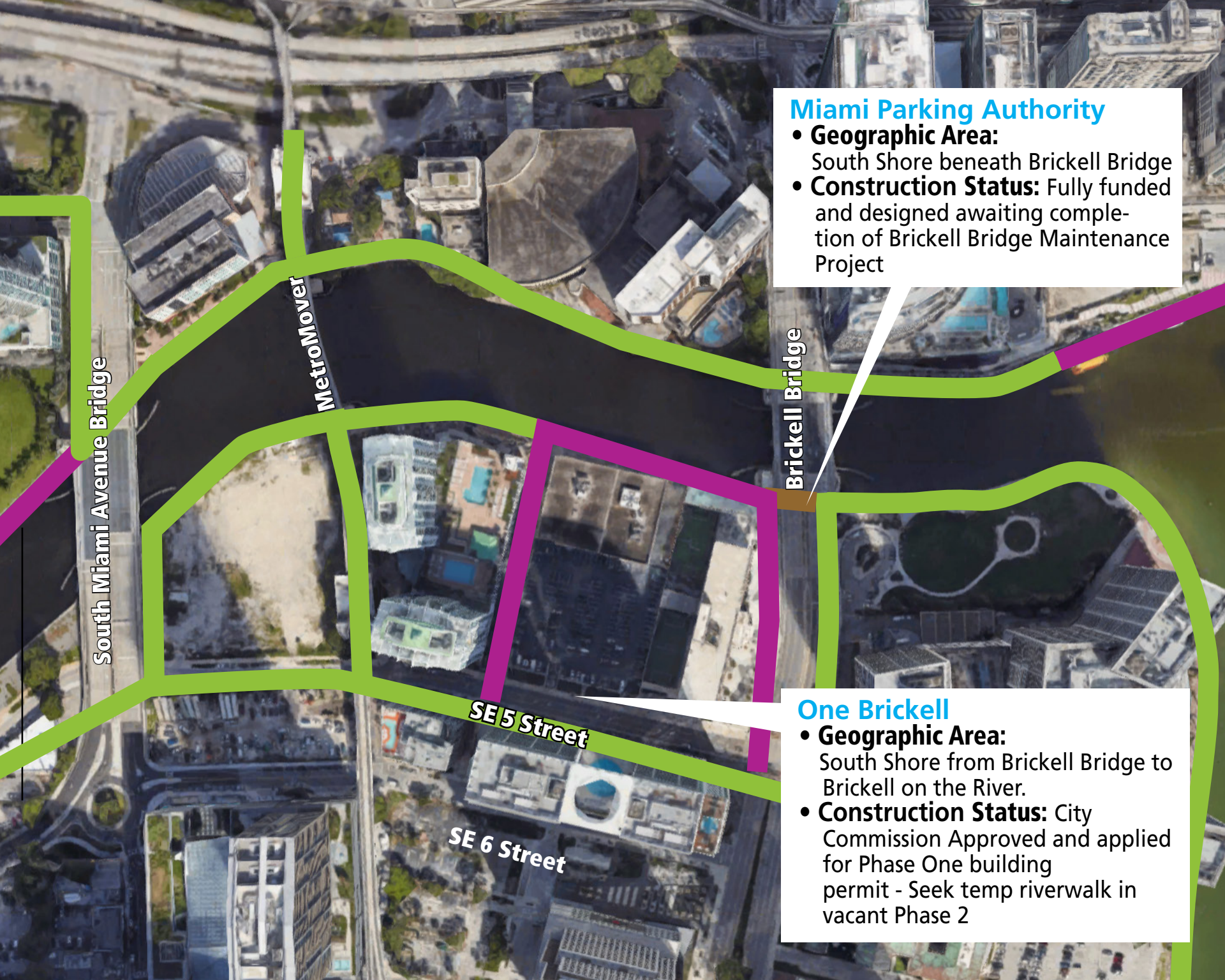
-  City of Miami Site
-  Miami-Dade County Site
-  Miami Parking Authority Site
-  FDOT
-  Existing Greenway
-  Private Sector Public Riverwalk

**Public Riverwalk
under construction
Aston Martin Residences**



Miami River Commission





Miami Parking Authority

- **Geographic Area:** South Shore beneath Brickell Bridge
- **Construction Status:** Fully funded and designed awaiting completion of Brickell Bridge Maintenance Project

One Brickell

- **Geographic Area:** South Shore from Brickell Bridge to Brickell on the River.
- **Construction Status:** City Commission Approved and applied for Phase One building permit - Seek temp riverwalk in vacant Phase 2

South Miami Avenue Bridge

Metro Mover

Brickell Bridge

SE 5 Street

SE 6 Street

One River Point

- **Geographic Area:** North Shore from Miami Avenue Bridge to Ivy and Mint
- **Construction Status:** Public riverwalk in approved One River Point submitted building permit application

Second Avenue Bridge

Metro Rail Bridge

South Miami Avenue Bridge

SE 6 Street

SE 7 Street

Latitude on the River

- **Geographic Area:** Riverwalk connector between the existing riverwalks at Latitude on the River and beneath 2nd Avenue Bridge
- **Construction Status:** Funded and designed awaiting building permit

Edge on Brickell

- **Geographic Area:** 55 South Miami Avenue Road
- **Construction Status:** Plans approved by the City of Miami



Flagler ST. Bridge

City of Miami

- **Geographic Area:**
1 SW South River Dr and Flagler St deadend into SW North River Dr.
- **Construction Status:** Needs funding and design

1ST. Bridge

FDOT'S First Street Bridge

- **Geographic Area:**
Beneath and adjacent to new First Street Bridge
- **Construction Status:**
Under construction

Approved Wharf

- **Geographic Area:**
North Shore Riverwalk, from I-95 to First Street Bridge
- **Construction Status:**
Plans approved

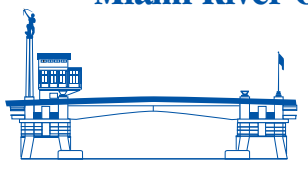
Miami River SAP

- **Geographic Area:**
South Shore Riverwalk from 2nd Avenue Bridge to Jose Marti Park
- **Construction Status:**
City approved SAP-submitted Phase 1 building permit application

Vacant Restaurant

- **Geographic Area:**
North Shore between First & Flagler Bridges
- **Construction Status:**
80 percent complete-construction stopped

Miami River Commission





NW 5 Street

NW 5 St. Bridge

NW North River Dr.

NW South River Dr.

NW 3 Street

Gramps on the River

- **Geographic Area:** 341 NW South River Dr
- **Construction Status:** City of Miami approved, construction commencing 2021

NW 2 Street

Riverfront Restaurant

- **Geographic Area:** 311 NW South River Dr.
- **Construction Status:** City of Miami approved, construction commencing 2021

NW 1 Street

Riverfront Restaurant

- **Geographic Area:** 131-125 NW South River Dr.
- **Construction Status:** City of Miami approved plans

Lummus Park

Flagler St. Bridge

Naheem Khan

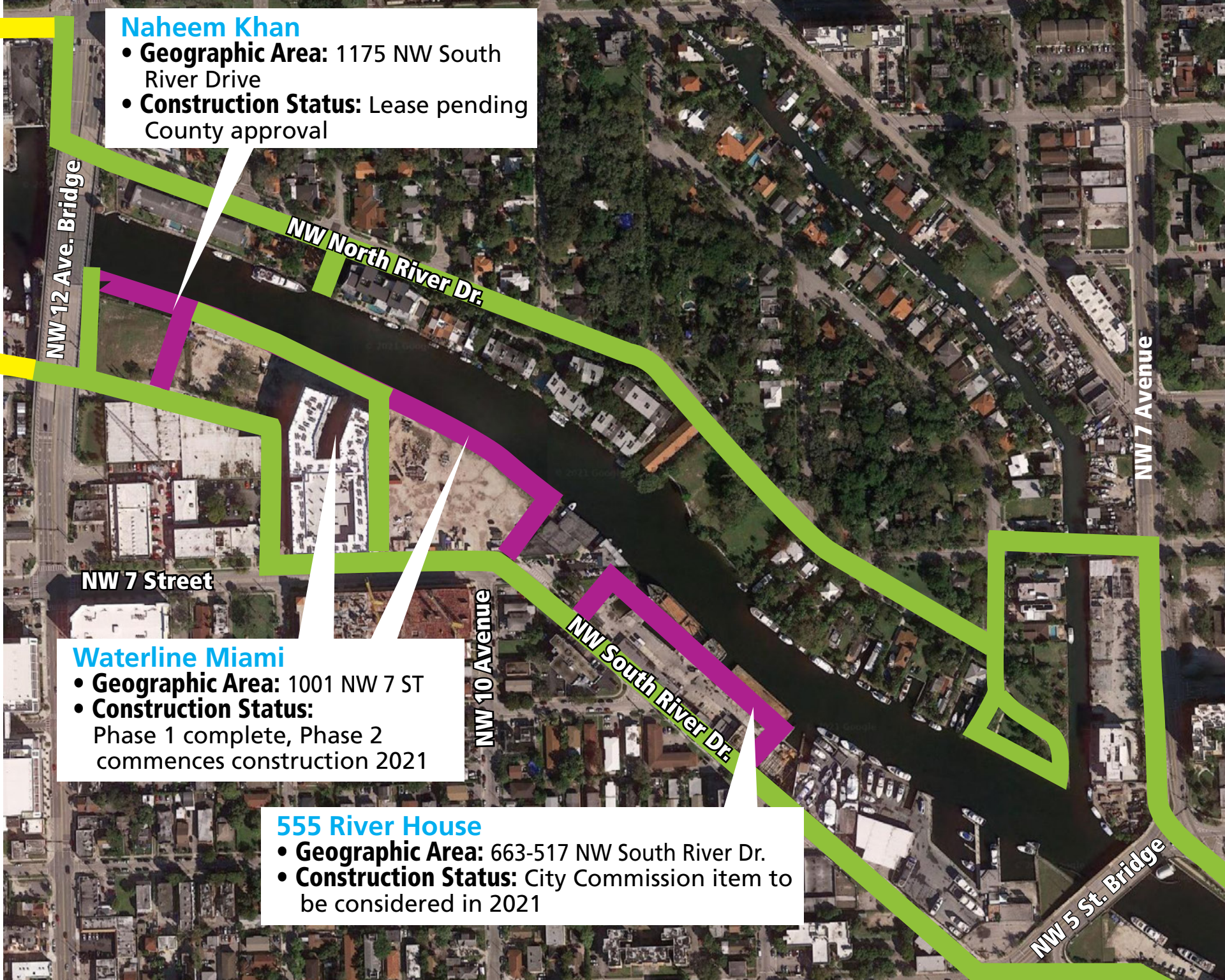
- **Geographic Area:** 1175 NW South River Drive
- **Construction Status:** Lease pending County approval

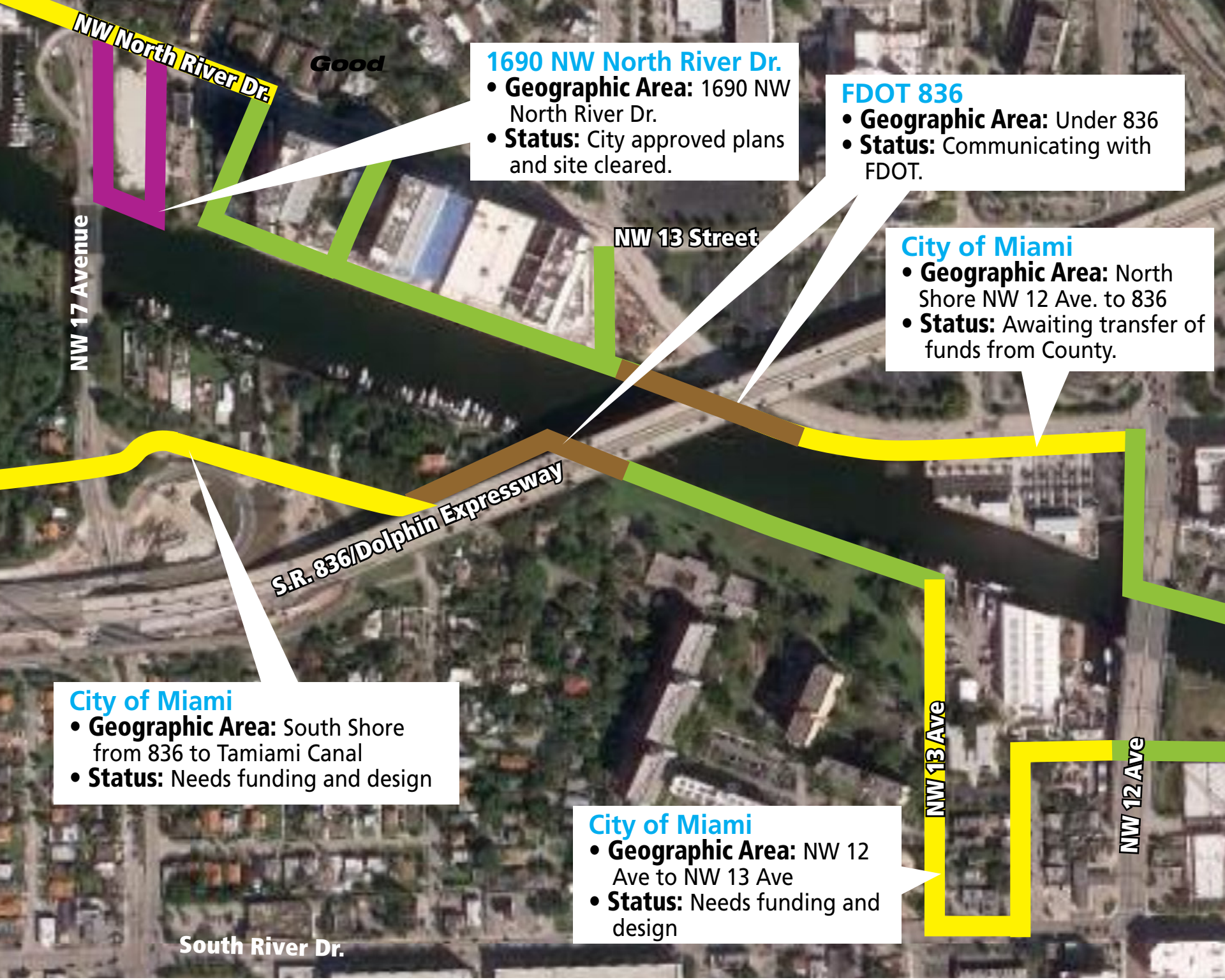
Waterline Miami

- **Geographic Area:** 1001 NW 7 ST
- **Construction Status:** Phase 1 complete, Phase 2 commences construction 2021

555 River House

- **Geographic Area:** 663-517 NW South River Dr.
- **Construction Status:** City Commission item to be considered in 2021





NW North River Dr.

Good

1690 NW North River Dr.
• **Geographic Area:** 1690 NW North River Dr.
• **Status:** City approved plans and site cleared.

FDOT 836
• **Geographic Area:** Under 836
• **Status:** Communicating with FDOT.

City of Miami
• **Geographic Area:** North Shore NW 12 Ave. to 836
• **Status:** Awaiting transfer of funds from County.

NW 17 Avenue

NW 13 Street

S.R. 836/Dolphin Expressway

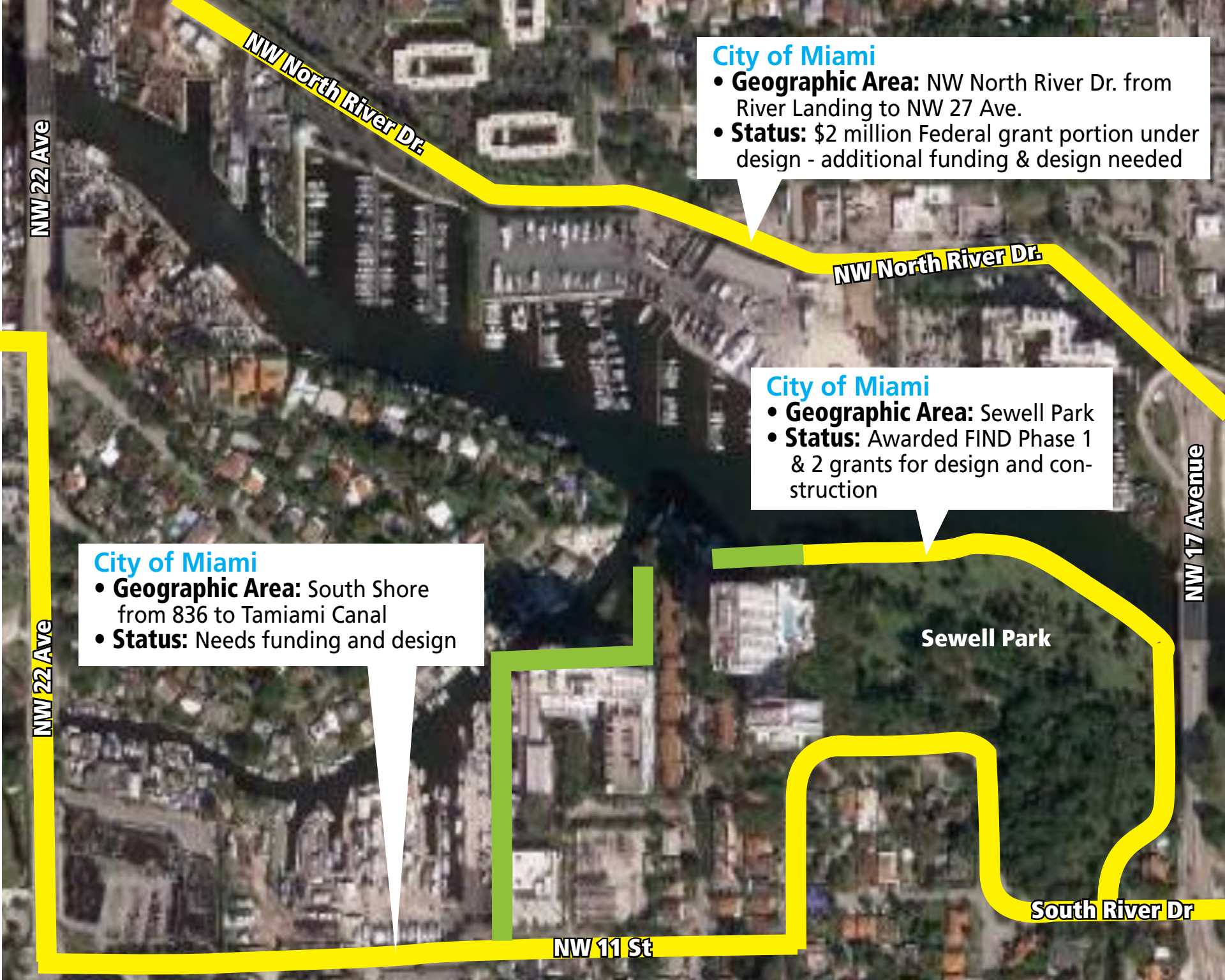
City of Miami
• **Geographic Area:** South Shore from 836 to Tamiami Canal
• **Status:** Needs funding and design

City of Miami
• **Geographic Area:** NW 12 Ave to NW 13 Ave
• **Status:** Needs funding and design

NW 13 Ave

NW 12 Ave

South River Dr.



NW North River Dr

City of Miami

- **Geographic Area:** NW North River Dr. from River Landing to NW 27 Ave.
- **Status:** \$2 million Federal grant portion under design - additional funding & design needed

NW North River Dr

City of Miami

- **Geographic Area:** Sewell Park
- **Status:** Awarded FIND Phase 1 & 2 grants for design and construction

Sewell Park

City of Miami

- **Geographic Area:** South Shore from 836 to Tamiami Canal
- **Status:** Needs funding and design

South River Dr

NW 11 St

NW 22 Ave

NW 22 Ave

NW 17 Avenue



City of Miami

- **Geographic Area:** NW North River Dr. from River Landing to NW 27 Ave.
- **Status:** \$2 million Federal grant portion under design - additional funding & design needed

2507 NW 16 St Road

- **Geographic Area:** 2507 NW 16 St Road
- **Status:** City approved zoning change


Brisas Del Rio

- **Geographic Area:** 1583 NW 24 Ave
- **Status:** City approved plans

City of Miami

- **Geographic Area:** South Shore from 836 to Tamiami Canal
- **Status:** Needs funding and design

NW 14 Street



NW 20 St

NW South River Dr

City of Miami

- **Geographic Area:** South Shore from 836 to Tamiami Canal
- **Status:** Needs funding and design

Salinity Dam

NW South River Dr

LEGEND

- Option 1
- Option 2
- Option 3
- MDC Current Project
- Existing Greenway
- City of Miami Site

Element Hotel MIA

EVEN Hotel MIA

Radisson Hotel

Staybridge Suite MIA

NW 25 St

Miami Intermodal Center

NW 37 Avenue

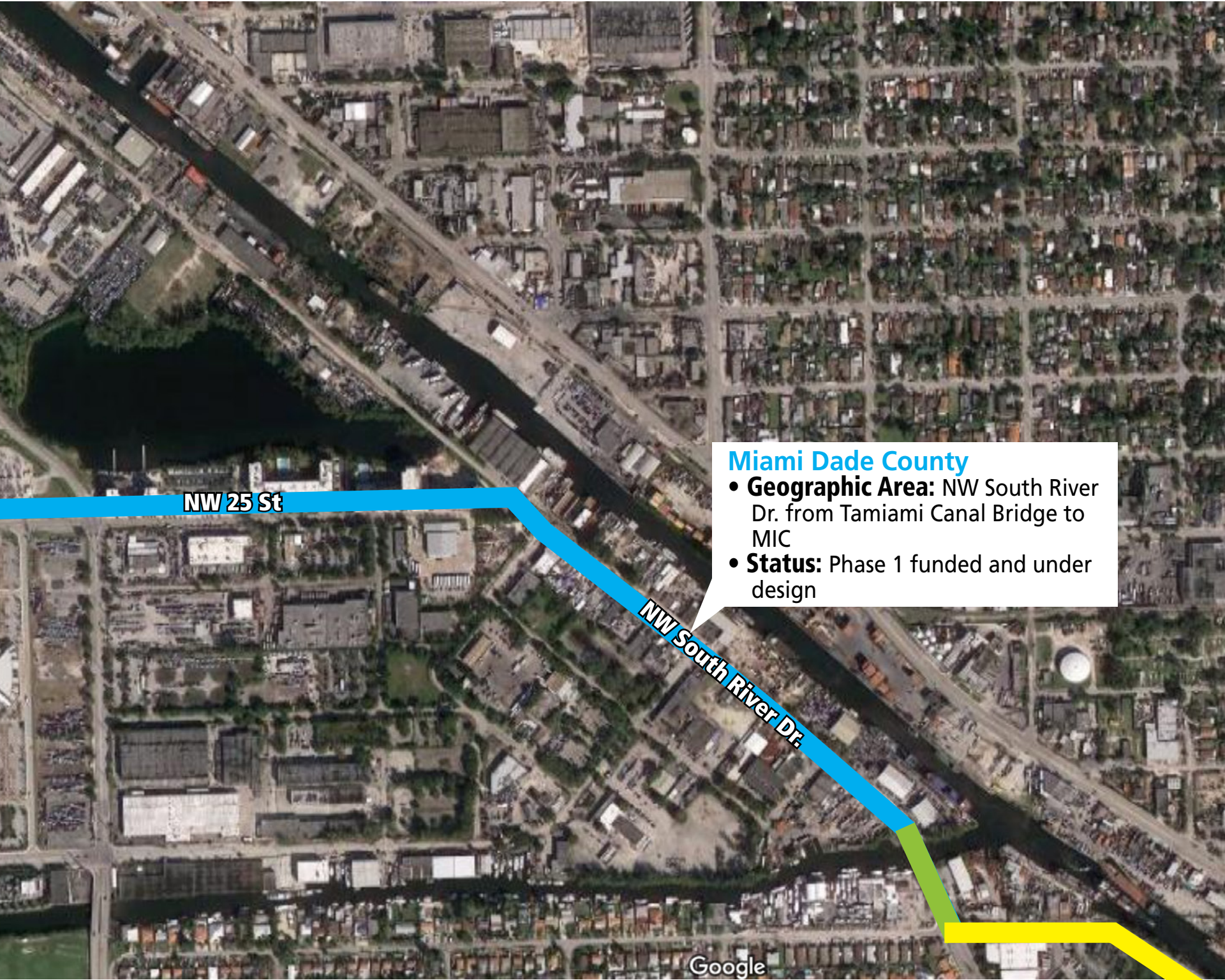
NW 33 Ave

NW 24 ST RD

NW 21 ST

Sheraton Miami Hotel & Executive Suites





NW 25 St

NW South River Dr.

Miami Dade County

- **Geographic Area:** NW South River Dr. from Tamiami Canal Bridge to MIC
- **Status:** Phase 1 funded and under design